



VNE700 - VNY600

Rating Definition

Prime Power - VNE700

Rating corresponds to ISO Standard Power for continuous operation. It is applicable for supplying electrical power at variable load for an unlimited number of hours instead of commercially purchase power. A 10% overload capability for governing purpose is available for this rating .

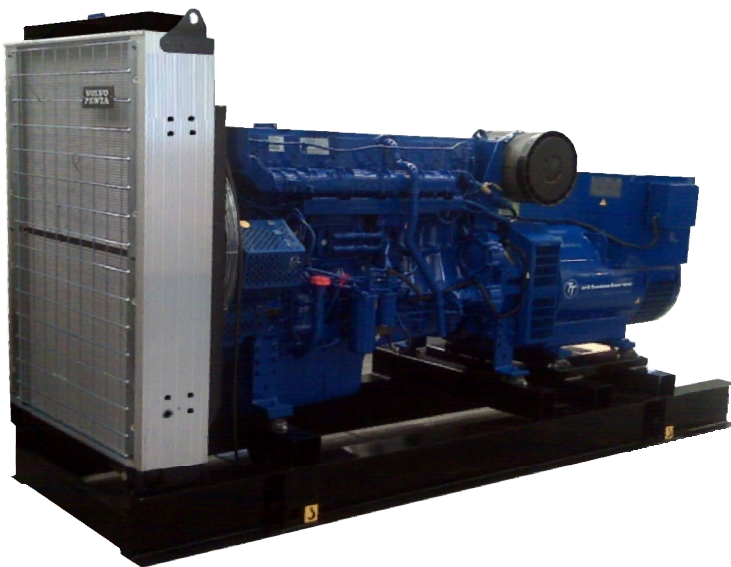
Standby Power - Model VNY600

Is applicable for supplying standby electrical power at variable load in areas with well establish electrical networks in the event of normal failure.

No overload capavility is available for this rating 1hp = 1kW-1.36

Note: the engine performance corresponds to ISO3046, BS5514 and DIN 6217.

Power output guaranteed within 0 to +2% att rated ambient conditions at delivery, Ratings are based on ISO8528.



Output Ratings				0.8 p.f)
Frequency	Models	Voltage	kVA	kWe
50 Hz	VNE700	380-415V	630 (125/40 ris ϕ)	504
60 Hz	VNY600	440-220V	757 (163/27 ris ϕ)	605

Technical data		
Engine Model:	TWD1643GE	
Number of Cylinders:	6 In-line	
Bore:mm (in)	144 (5.67)	
Stroke:mm (in)	165 (6.50)	
Displacement_s(in³)	16.12 (984)	
Compression ratio:	16.5:1	
Performance	1500rpm-PRIMI:	1800rpm-Standb
With FankW(hp)	536 (729)	644 (876)
Lubrication system	1500rpm-PRIMI:	1800rpm-Standb
Oil consumption_h(gal/h)	0.10 (0.026)	0.11 (0.039)
Total oil incl filters_{ster}	48	48
Fuel system	1500rpm-PRIMI:	1800rpm-Standb
100% load_g/kWh(lb/hph)	199 (0.322)	204 (0.331)
Intake & exhaust system	1500rpm-PRIMI:	1800rpm-Standb
Air consum_m³/min (cfm)	44 (1541)	55 (1937)
Max.restriction_P (In wc)	5 (20.1)	5 (20.1)
Heat rejection to exhaust_W (BTU/min)	415 (23601)	530 (30141)
Exhaust gas temp_C (°F)	450 (842)	461 (862)
Max.back-pressure_P (In wc)	10 (40.2)	10 (40.2)
Exhaust gas flow_m³/min (cfm)	101.6 (3586)	130.1(4593)
Generating Set Model:	VNE700	VNY600
Alternator Model	HCI534F	HCI534E
Insulation System:	Class H	
Control System:	Self exited	
AVR	SX460	

Dimensions and Weights				
Lengthcm	Widthcm	Heigthcm	VNE700	
400	181	238	Drv: 3753 kgs	Wet: 3823 kgs
			VNY600	
			Drv: 3611 kgs	Wet: 3681 kgs

Inyen, S.A. de C.V.
carlos.vargas@inyen.com.mx
ventas@inyen.com.mx
ventas3@inyen.com.mx